



We Bring Natural Ingredient From Nature

Shaanxi Guanjie Technology Co., Ltd.

Certificate of Analysis

Product Name	Quercetin	Manufacture Date	Sep. 16th, 2022
Batch No.	QU220916	Certificate Date	Sep. 20th, 2022
Batch Quantity	1300kgs	Expiration Date	Sep. 15th, 2024
Storage Condition	Store in cool & dry place, Keep away from strong light and heat.		

Item	Specification	Result
Basic Product Information		
Genus and Species	<i>Sophora japonica L.</i>	Conform
Part of the Plant	Flower	Conform
Country of Origin	China	Conform
Marker Compounds		
Quercetin(on dry product)	≥98%(UV Method)	99.5%
	≥95%(HPLC Method)	95.6%
Organoleptic Data		
Appearance	Yellow,crystalline powder	Conform
Solubility	Practically insoluble in water	Conform
	Soluble in aqueous alkaline sol.	Conform
Melting point	305-315°C	312°C
Identification	Must positive	Conform
Tests		
Loss on drying	9.0% to 12.0%	10.1%
Sulphated ash	≤0.5%	0.03%
Mesh Size	100% pass 80mesh	Conform
Heavy Metal	≤10 ppm	<10ppm
Cadmium	≤1ppm	0.02
Arsenic	≤1ppm	0.03
Lead	≤3.0 ppm	0.04
Mercury	<0.1 ppm	0.02
Microbiology		
Total Plate Count	<1,000cfu/g	Conform
Total Yeast & Mold	<100cfu/g	Conform
E. Coli	Negative	Negative
Pseudomonas aeruginosa	Negative	Negative

Conclusion: Complies with enterprise standard

Tested by: Liu gang

Date: 2022.09.20

Approved by: Susan Sun, Ph.D

Date: 2022.09.20



<http://www.gybiotech.com/> Tel: 0086-29-86626946
Add: 6th floor, 2nd building, Xijing NO.3, XiJing industrial park

Shaanxi, China



We Bring Natural Ingredient From Nature

Shaanxi Guanjie Technology Co., Ltd. (factory)

Certificate of Analysis

Product Name	Quercetin Anhydrous	Manufacture Date	Oct. 05th, 2022
Batch No.	QA221005	Certificate Date	Oct. 10th, 2022
Batch Quantity	1160kgs	Expiration Date	Oct. 04th, 2024
Storage Condition	Store in cool & dry place, Keep away from strong light and heat.		

Item	Specification	Result	Method
Basic Product Information			
Genus and Species	<i>Sophora japonica L.</i>	Conform	/
Part of the Plant	Flower	Conform	/
Country of Origin	China	Conform	/
Marker Compounds			
Assay(on dry product)	≥95.0%	98.4%	HPLC
	≥98.0%	98.70%	UV
Organoleptic Data			
Appearance	Powder	Conform	GJ-QCS-1008
Color	Yellow Fine Powder	Conform	GB/T 5492-2008
Odor	Characteristic	Conform	GB/T 5492-2008
Taste	Characteristic	Conform	GB/T 5492-2008
Physical Characteristics			
Particle Size (80 mesh)	95% pass through 80mesh	Conform	GB/T 5507-2008
Bulk Density	0.15g/ml-0.4g/ml	0.21g/ml	CP2020
Tapped Density	0.25g/ml-0.5g/ml	0.32g/ml	CP2020
Solvent(s) Residue	USP Standard	Conform	USP<467>
Pesticide Residue	USP Standard	Conform	USP<561>
Loss on drying	≤3.5%	2.9%	USP<731>
Ash Content	≤1.0%	0.2%	USP<561>
Heavy Metals			
Total Heavy Metals	≤10ppm	Conform	USP <231>, method II
As	≤2.0ppm	Conform	AAS
Pb	≤2.0ppm	Conform	AAS
Cd	≤1.0ppm	Conform	AAS
Hg	≤0.1ppm	Conform	AAS
Microbiology			
Total Plate Count	<1,000cfu/g	<100cfu/g	AOAC 990.12, 18th
Total Yeast & Mold	<100cfu/g	<10cfu/g	FDA (BAM) Chapter 18, 8th Ed.
E. Coli	Negative	Negative	AOAC 997.11, 18th
Salmonella	Negative	Negative	FDA (BAM) Chapter 5, 8th Ed.

Conclusion: Complies with specification

Tested by: Liu gang

Date: 2022.10.10

Approved by: Susan Sun, Ph.D

Date: 2022.10.10



<http://www.gybiotech.com/>

Tel: 0086-29-8662694

FAX:0086-29-68740290

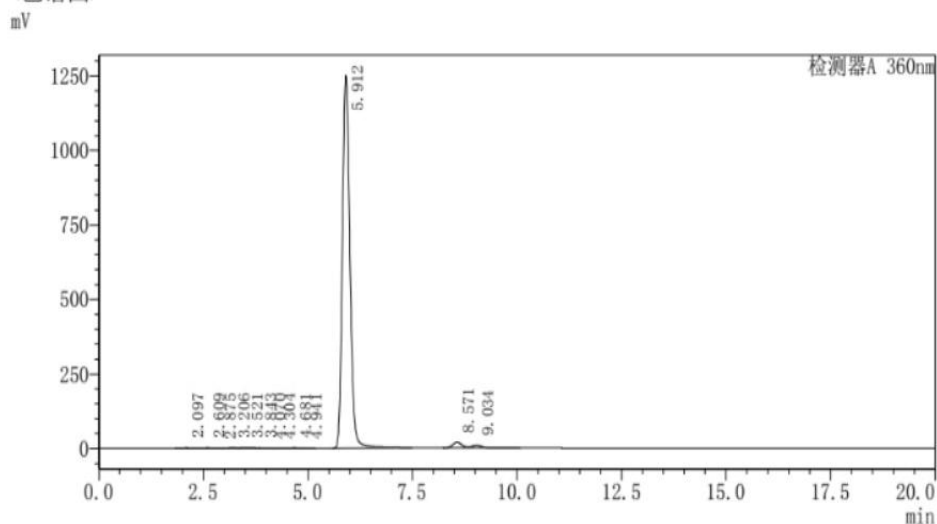
Add: 6th floor, 2nd building, Xijing NO.3, XiJing industrial park , DianZi western street, Xi'an, Shaanxi, China

SHIMADZU LabSolutions 分析报告

<样品信息>

样品名 : 槲皮素
 样品ID :
 数据文件名 : 槲皮素.lcd
 方法文件名 : 槲皮素.lcm
 批处理文件名 : 槲皮素.lcb
 样品瓶号 : 2-32
 进样体积 : 10 uL
 分析日期 : 2021/11/8 15:24:06
 处理日期 : 2021/11/9 9:27:28
 样品类型 : 未知
 级别号 : 1
 分析者 : System Administrator
 处理者 : System Administrator

<色谱图>



<峰表>

检测器A 360nm

峰号	保留时间	面积	高度	浓度	浓度单位	标记	化合物名
1	2.097	6629	413	0.041			
2	2.609	3923	534	0.024		V	
3	2.875	1696	175	0.011			
4	3.206	9910	660	0.062		V	
5	3.521	26244	1954	0.163		V	
6	3.843	4506	373	0.028		V	
7	4.070	2195	240	0.014		V	
8	4.304	3055	227	0.019		V	
9	4.681	4566	341	0.028		V	
10	4.941	2489	219	0.015		V	
11	5.912	15579735	1249146	96.755		M	
12	8.571	297310	19198	1.846			
13	9.034	159917	9150	0.993		V	
总计		16102175	1282629				

AD2

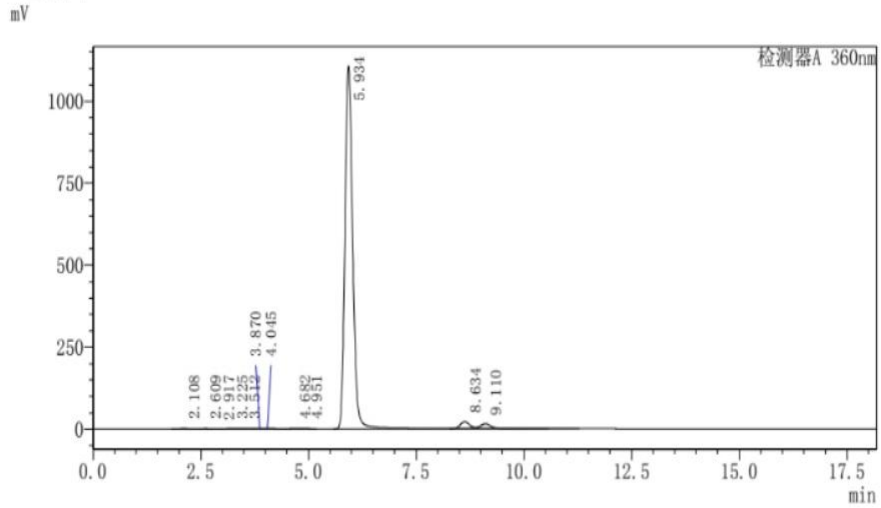
峰号	保留时间	面积	高度	浓度	浓度单位	标记	化合物名
总计							

SHIMADZU LabSolutions 分析报告

<样品信息>

样品名 : 对照
 样品ID :
 数据文件名 : 对照001.lcd
 方法文件名 : 槲皮素.lcm
 批处理文件名 : 槲皮素.lcb
 样品瓶号 : 2-31
 进样体积 : 10 uL
 分析日期 : 2021/11/8 15:51:46
 处理日期 : 2021/11/9 9:26:19
 样品类型 : 未知
 级别号 : 1
 分析者 : System Administrator
 处理者 : System Administrator

<色谱图>



<峰表>

检测器A 360nm

峰号	保留时间	面积	高度	浓度	浓度单位	标记	化合物名
1	2.108	7988	611	0.000			
2	2.609	4128	525	0.000		V	
3	2.917	2677	227	0.000			
4	3.225	10530	673	0.000		V	
5	3.512	14992	1111	0.000		V	
6	3.870	6109	579	0.000		V	
7	4.045	11589	677	0.000		V	
8	4.682	5647	440	0.000		V	
9	4.951	2915	261	0.000		V	
10	5.934	13998301	1104520	0.000		S	
11	8.634	325662	21090	0.000		T	
12	9.110	269184	15208	0.000		TV	
总计		14659721	1145923				

AD2

峰号	保留时间	面积	高度	浓度	浓度单位	标记	化合物名
总计							